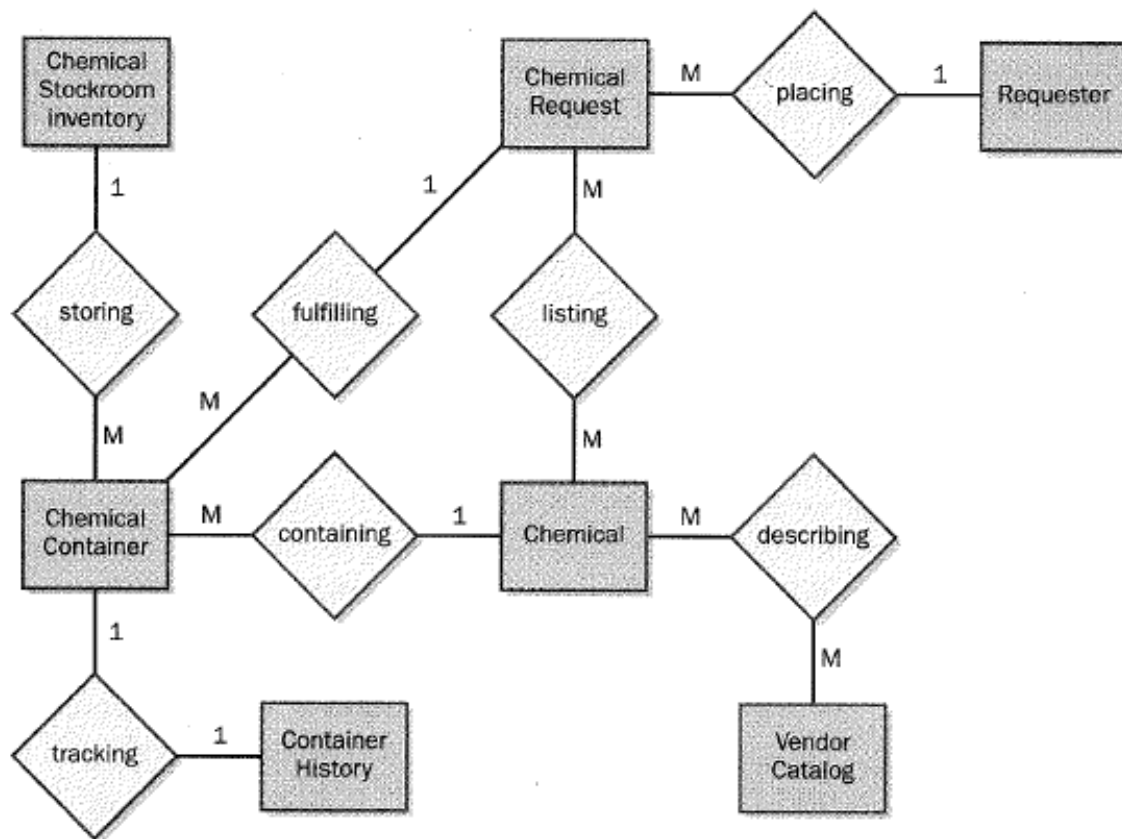


# Specifying data requirements

Chapter 13

# Entity-Relationship Diagram (Chen)

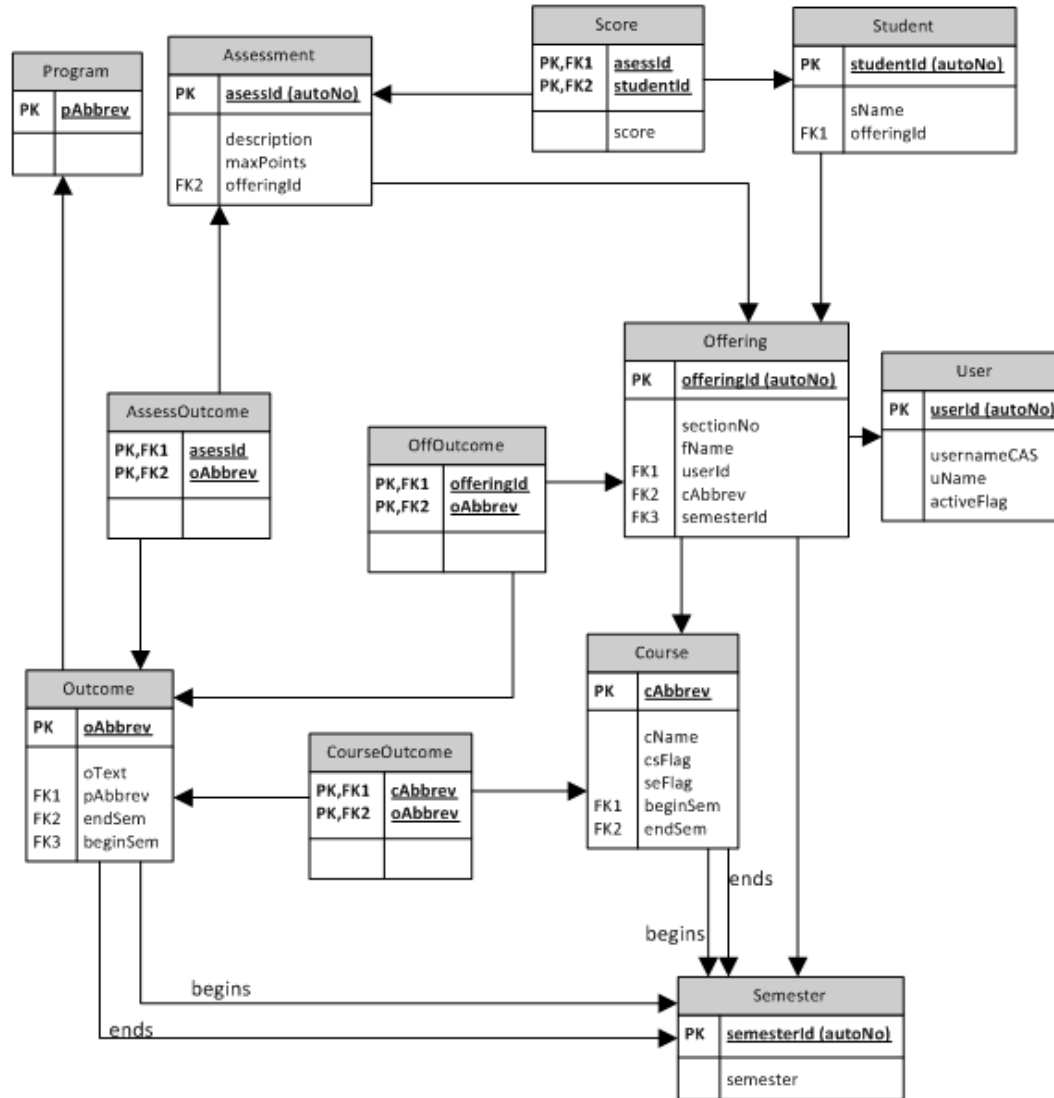


**Figure 11-2** Partial entity-relationship diagram for the Chemical Tracking System.



# AbOut DB Schema

Low Level  
5/25/2012



# Sample CRUD Matrix

Use Case \ Entity	Order	Chemical	Requester	Vendor Catalog
Place Order	C	R	R	R
Change Order	U, D		R	R
Manage Chemical Inventory		C, U, D		
Report on Orders	R	R	R	
Edit Requesters			C, U	

**FIGURE 13-5** Sample CRUD matrix for the Chemical Tracking System.



# SRS template

## Appendices

A – Definitions, Acronyms and Abbreviations

B – Analysis models

C - Data Dictionary

D – Report Specification (optional)

E – Business Rules (optional)

F - Sample User Interface (optional)

G - Issues



# Data Dictionary

Data Element	Description	Composition or Data type	Length	Values
<i>Name of data item being defined</i>	<i>Textual description of the business meaning of the data element</i>	<p><i>For primitive data elements: data type (integer, floating point, alphabetic, date, etc.) and, as appropriate, format (e.g. date as MM/DD/YYYY).</i></p> <p><i>For data structures show the components that comprise the structure. ,</i></p>	<i>Maximum number of characters for primitives; blank for structures</i>	<i>List of allowed values, default, rules governing legal values, and any other description of the data values</i>



# Report Specification

Report ID:	
Report Title:	
Report Purpose:	
Data Sources:	
Frequency and Disposition:	
Latency:	
Visual Layout:	
Header and Footer:	
Report Body:	
End-of-Report Indicator:	
Interactivity:	
Security Access Restrictions:	



# Dashboard Reporting





# Dashboard Reporting

## Social Media - Overview

