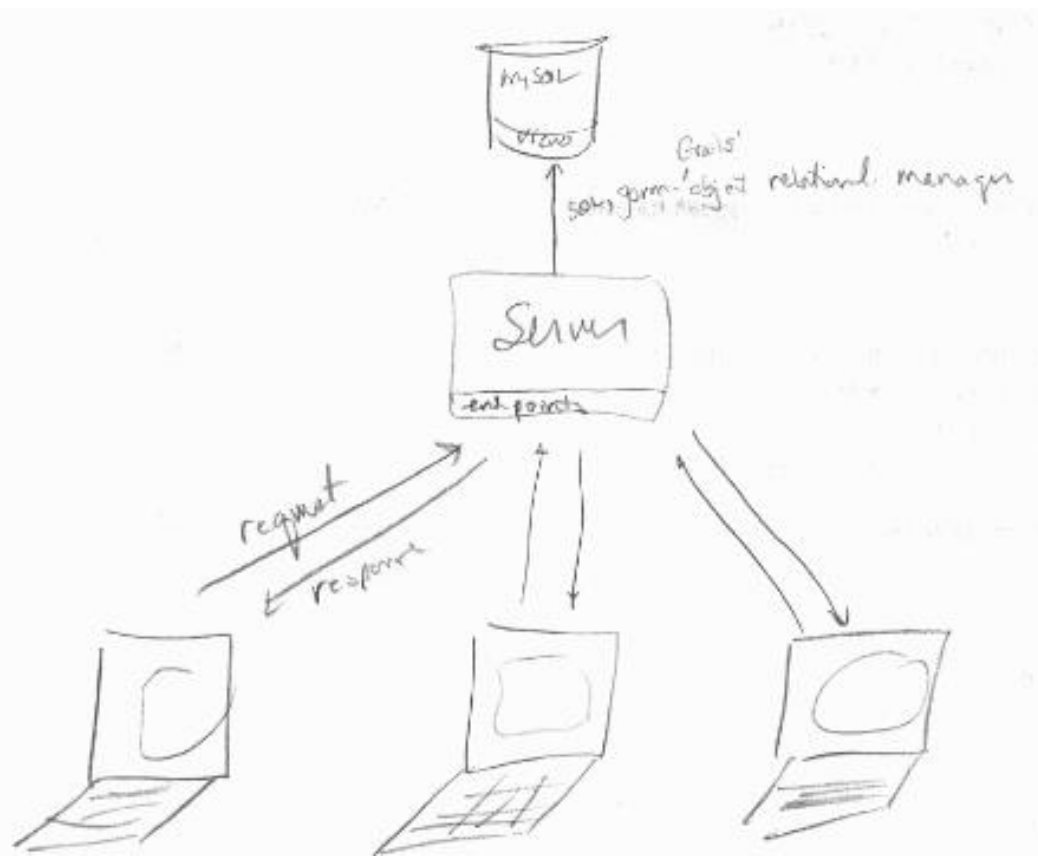


AbOut Refactor Road Map

Software  
Engineering

# Overview

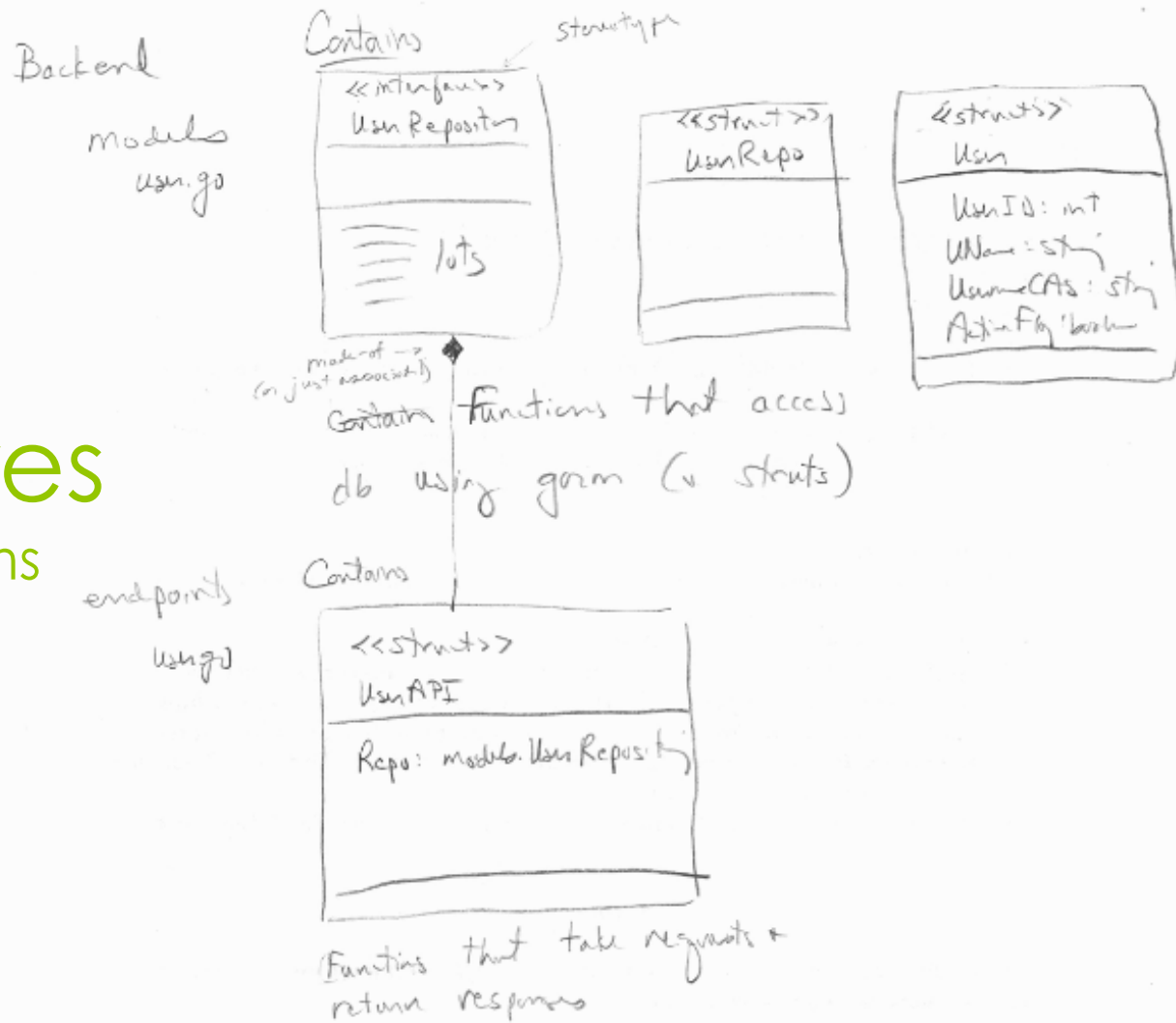


# models/user.go

```
<<interface>>  
User Repository  
-----  
-----  
GetAllUsers(): ([]User, error)  
GetUser(int): (User, error)  
DeleteUser(int): error  
AddUser(string, string, bool): (User, error)  
UpdateUser(User): error
```

# Structures

## Class Diagrams

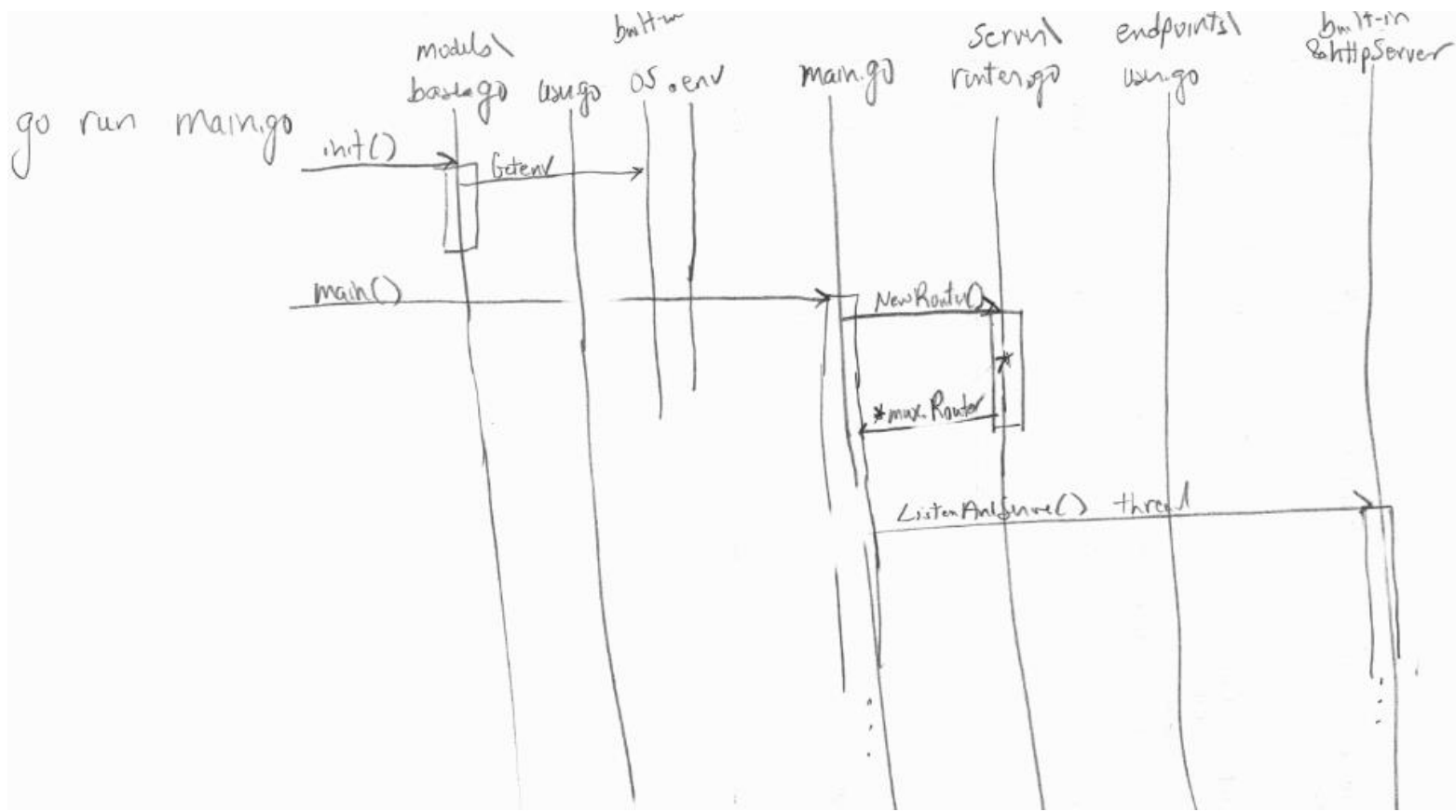


Server

Router - creates a mux router + defines the routes

# Setup Server

## Sequence Diagram



# Request Endpoint

## Sequence Diagram

