

Database Design, CSCI 340, Spring 2016
Quiz 1, Jan. 22

1. What does DBMS stand for?

2. Describe what is meant by meta data.

3. Give an example of meta data for the Hotel Reservation Database.

4. The following diagram shows that there are six entities and seven relationships in the DreamHome database. Does this information tell you more about the extension or intension of the DreamHome database? Circle the answer which is most appropriate.

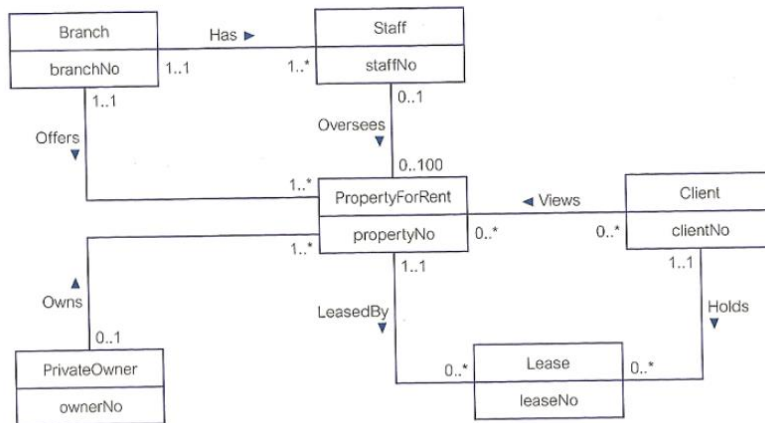


Figure 1.6 Example Entity-Relationship diagram.

a. Extension

b. Intension

