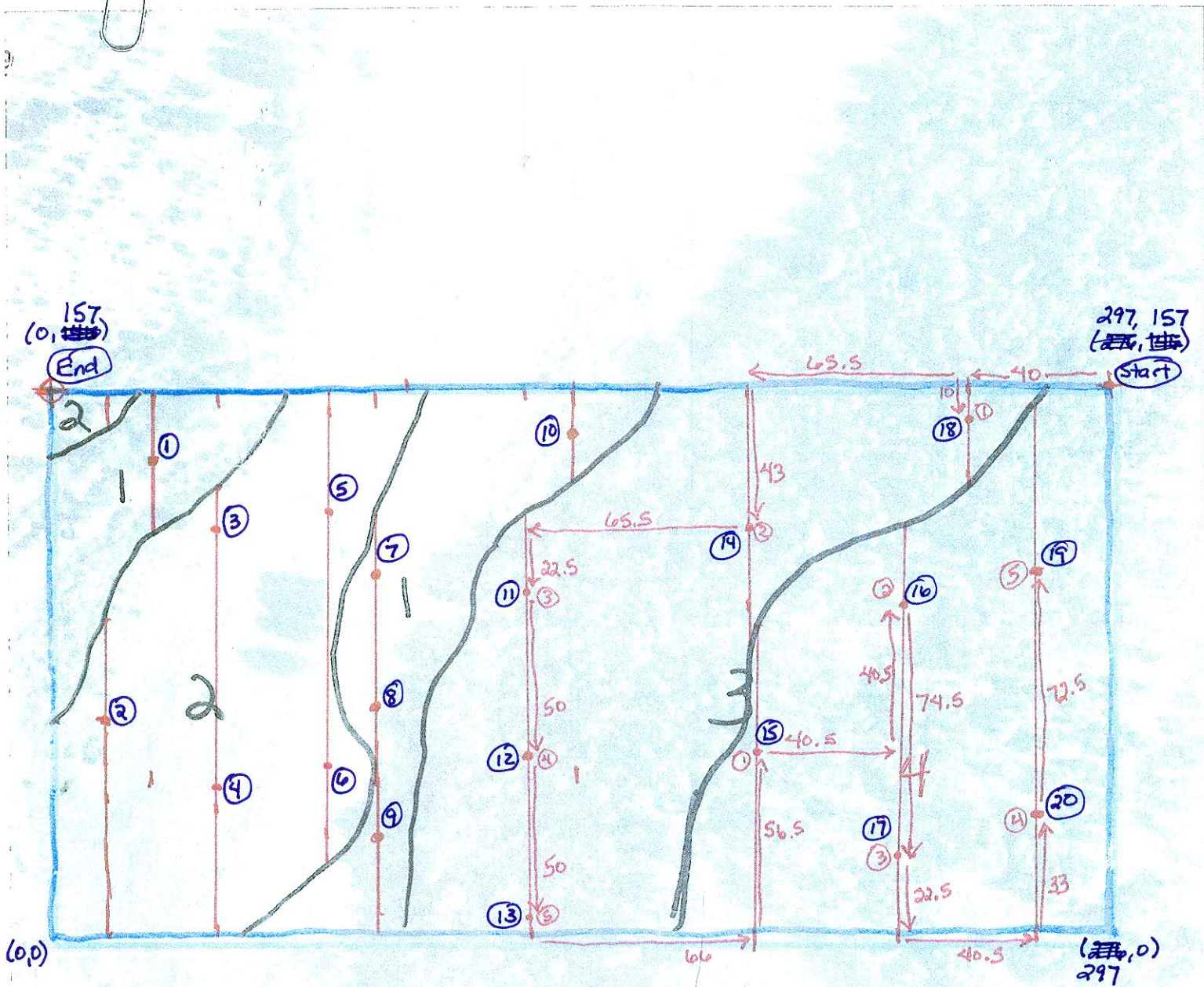
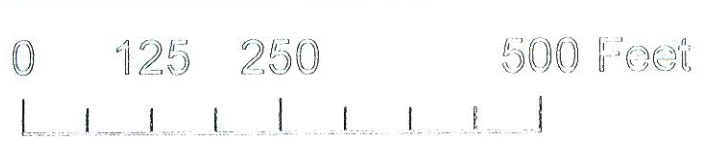


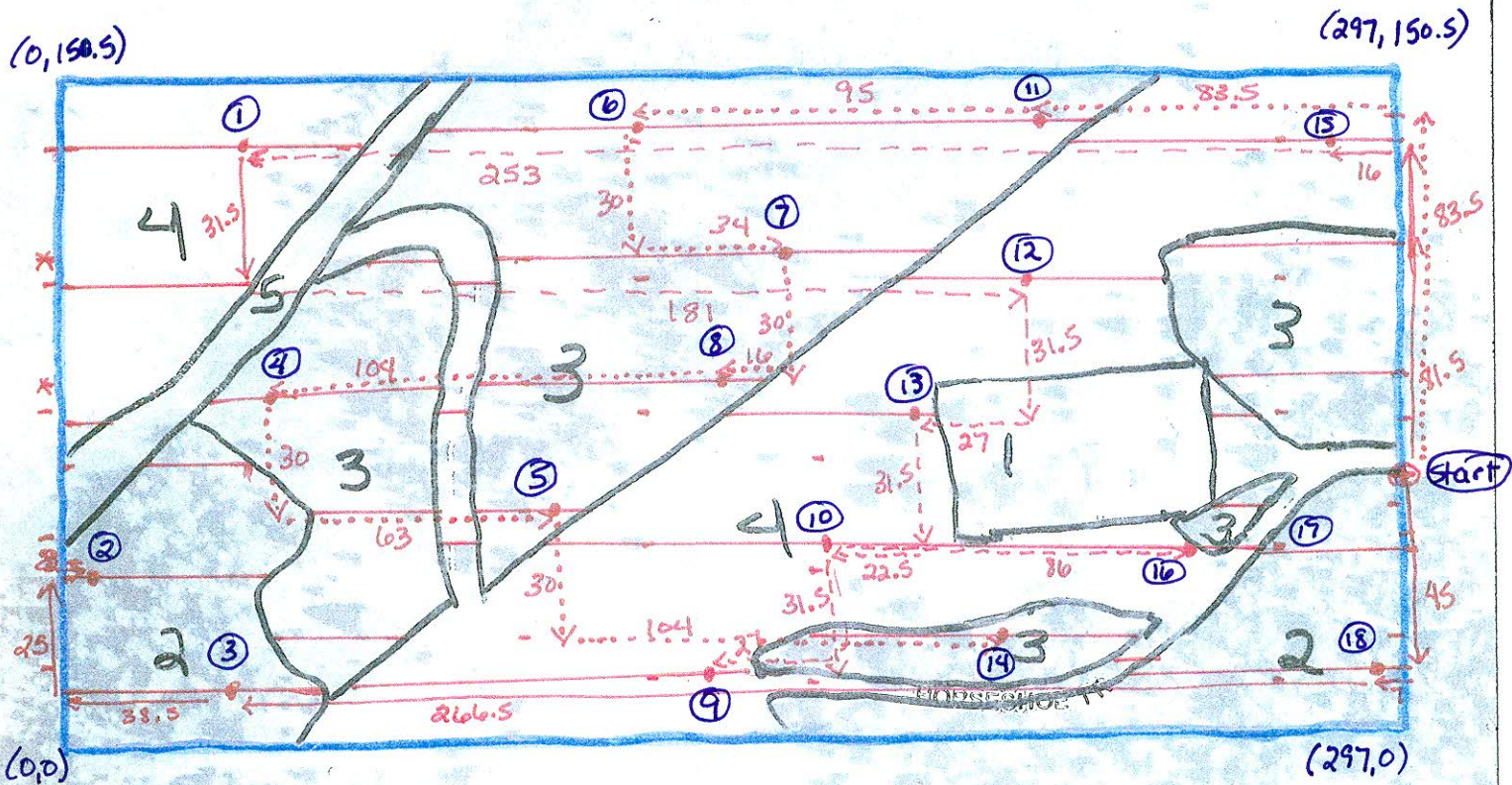
Van Dyne T1N R10W S30 WISE RIVER



Beginning at the Southwest corner of the tract herein described which is the Southwest corner of Lot #1, Section 30, T1N, R10W, P.M.M. and running thence N 00°-02'-57" W 676.56 ft., thence N 89°-57'-31" E 1321.14 ft., thence S 00°-00'-52" E 676.56 ft., thence S 89°-57'-31" W 1320.80 ft. to the place of beginning, containing an area of 20.52 acres, and subject to road right-of-way easement from U.S.F.S. road.

Source: Esri, DigitalGlobe, GeoEye, Earthstar Geographics, CNES/Airbus DS, USDA, USGS, Aero, Getmapping, Aerogrid, IGN, IGP, swisstopo, and the GIS User Community





Jardine Forest Park #2, S16, T01 N, R06 W, Lot 27,
Acres 20.004, COS 148863 F338B

QUAD 27

Source: Esri, DigitalGlobe, GeoEye, Earthstar Geographics, CNES/Airbus DS, USDA, USGS, AeroX, GeoMapping, AeroGRID, IGN, IGF, swisstopo, and the GIS User Community

0 125 250 500 Feet

